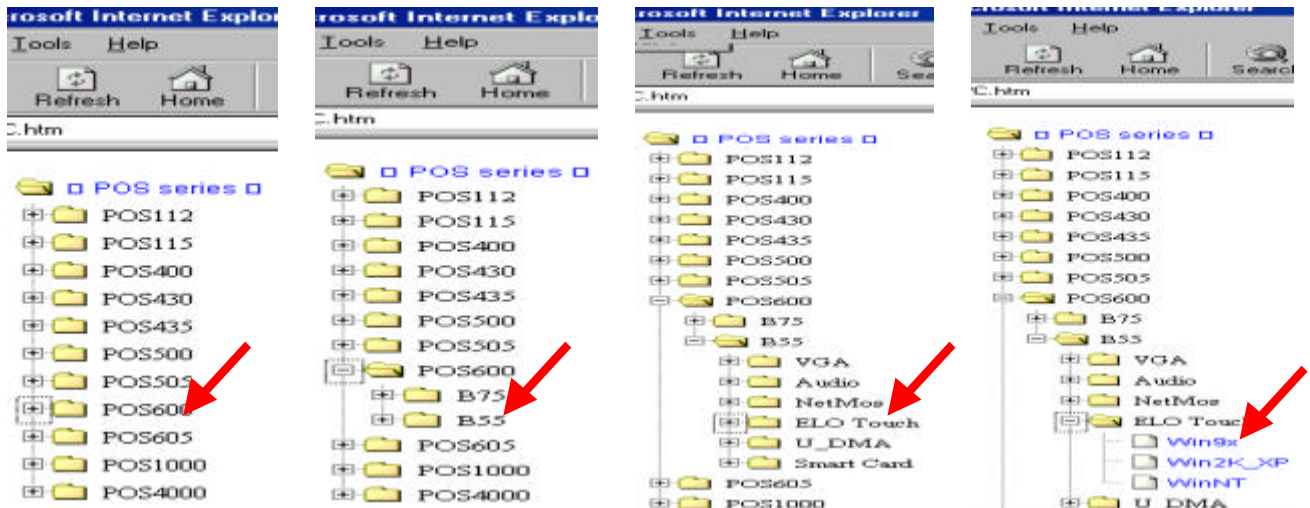


4. Install Peripherals

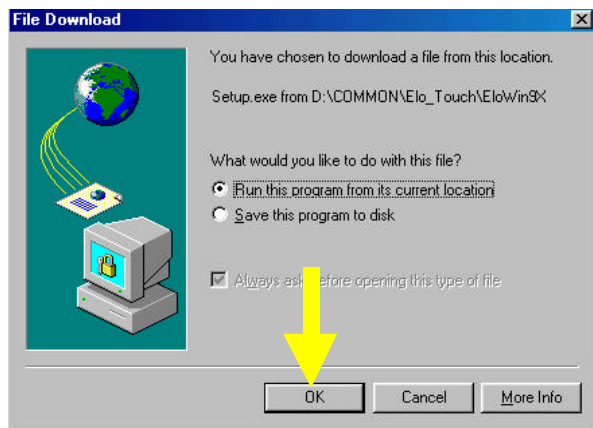
4.1 Install Touch Screen Driver

Before installing touch screen driver, connect the 15-pin high density D-SUB cable to the VGA ports.

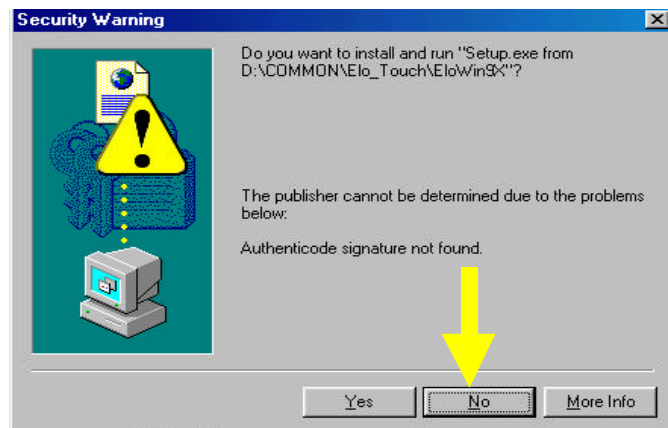
- Click the "My Computer" icon on the desktop.
- Click "Pospc20(D:)" icon on the My Computer window.



- Choose the POS system, MB type, and OS to be installed with Elo touch screen driver. It is POS600/B55/Win98 in this case



- Click "OK" on the File Download window.



- Click "OK" on the Security Warning window.



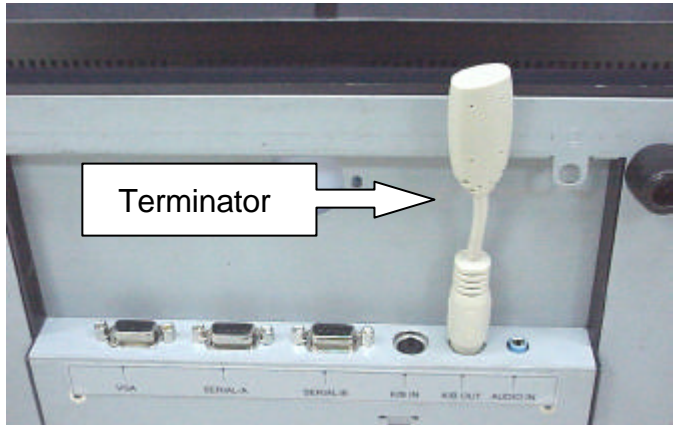
- Now the Elo driver is successfully installed.

4.2 Install the MCR Module (optional)



a. Install the MCR module to the right side of System Bay Module and lock it with two screws.

b. If you select a keyboard type MCR and the system does not connect a standard P/S2 keyboard, please insert the Terminator for simulate and instead of the P/S2 Keyboard.



c. If you choose keyboard type MCR, connect the KB port(system) and K/B IN(POS) with a P/S 2 connector, then connect the keyboard to the K/B OUT(POS).

d. If you choose serial type MCR, just connect the keyboard to the KB port on the system.

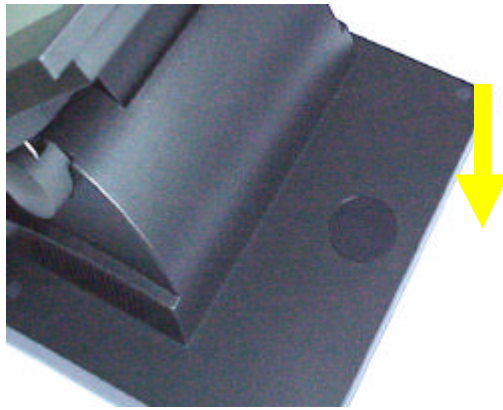
4.3 Install Customer Pole Display Module (optional)

For pole display connection, connect the Pole Display DB9M cable connector to any of the other COM ports of the system.



a. Connect the parts of the display pole

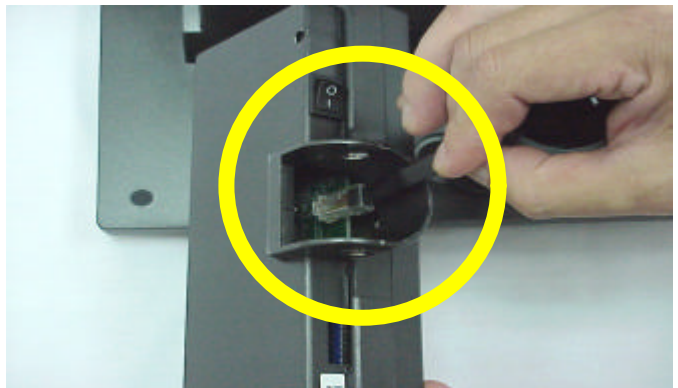
b. Remove Pole Display cover from POS terminal system unit by fingers.



a. Install the flat cable with RJ-45 end through the Pole Stud of POS terminal system unit and the Pole Display Tube.



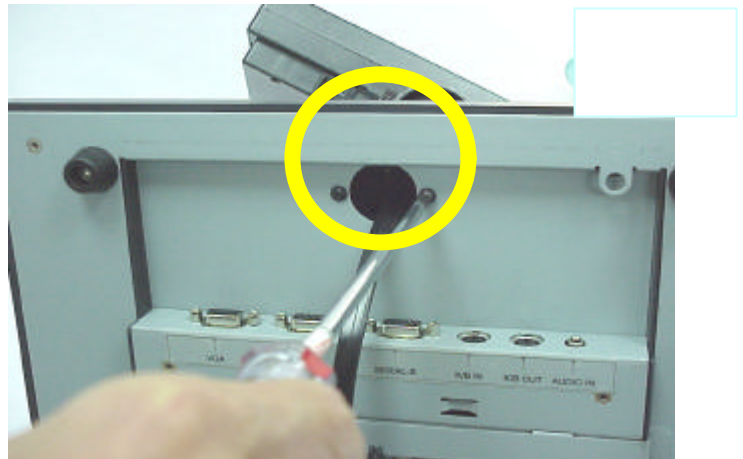
b. Install Pole Display flat cable inside the Display Panel.



c. Unscrew two adjustment nubs of the Pole Display module.



- d. Set Pole Display Stud onto POS terminal base by using two screws.



5. On-Screen Display

OSD MENU V1.1				
I-CONTRAST	(automatically adjust clock, phase, brightness, contrast, load default)			
CONTRAST	(screen contrast adjustment)			
BRIGHTNESS	(screen contrast adjustment)			
SHARPNESS	1	2	3	OFF
OSD POSITION	H (horizontal)	V (vertical)	T (transparency)	RECALL VALUE (return to default setting)
LANGUAGE	ENGLISH(default)			
	FRENCH			
	SPANISH			
	GERMAN			
	CHINESE			
	JAPANESE			
H/V-POSITON	H(horizontal)		V(vertical)	
ADVANCED SET	RGB COLOR		R(red)	
			G(green)	
			B(blue)	
	PHASE			
	CLOCK			
	COLOR LEVEL		W(white)	
B(black)				
AUDIO	(volume adjustment)			

- a. To save a function, press ENTER button. If you do not use or change any value of the control function, the OSD will disappear in 16 seconds.
- b. While the display is capable of other resolutions (as with all flat panel displays), it is a fixed matrix of pixels and best used at its native resolution – 800 x 600. For further information, please refer to your display card or system manual.AUTO ADJUST